



Lower Church Hill, Greenhithe, DA9 9BJ
Guide price £230,000 Freehold



The Homes Group are delighted to offer to the market this two bedroom Victorian style semi-detached house located within close proximity of Stone Crossing station and is offered with no forward chain.

The accommodation comprises of a 20'1 x 11' living room, 14'6 x 8'1 kitchen and ground floor bathroom with two bedrooms on the first floor plus a garden to the rear.

Living Room

20'1 x 11' (6.12m x 3.35m)

Kitchen

14'6 x 8'1 narrowing to 4'8 (4.42m x 2.46m narrowing to 1.42m)

Lobby

Ground Floor Bathroom

7'1 x 5'8 (2.16m x 1.73m)

Landing

Bedroom One

12'4 x 8' (3.76m x 2.44m)

Bedroom Two

11' x 7'4 (3.35m x 2.24m)

Rear Garden

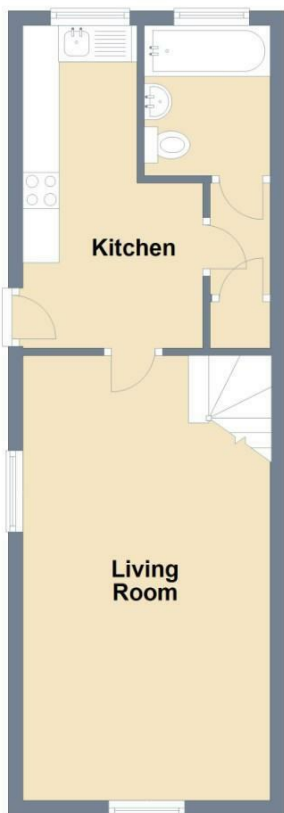
Tenure - Freehold

Council Tax - Band B

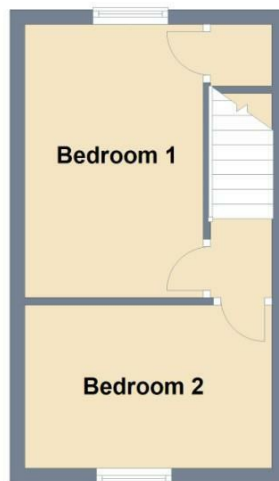




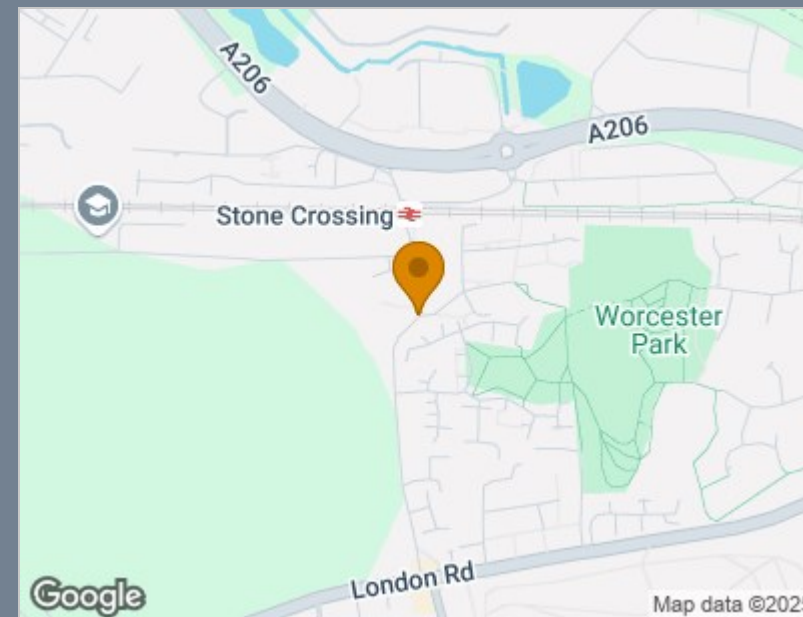
Ground Floor
Approx. 36.1 sq. metres (388.6 sq. feet)



First Floor
Approx. 20.7 sq. metres (222.6 sq. feet)



Total area: approx. 56.8 sq. metres (611.3 sq. feet)



Energy Efficiency Rating		Current	Potential
Very energy efficient - lower running costs			
(92 plus) A			90
(81-91) B			
(69-80) C			
(55-68) D		64	
(39-54) E			
(21-38) F			
(1-20) G			
Not energy efficient - higher running costs			
England & Wales		EU Directive 2002/91/EC	

Viewing

Please contact The Homes Group Office on 01322 875000 if you wish to arrange a viewing appointment for this property or require further information.

These particulars, whilst believed to be accurate are set out as a general outline only for guidance and do not constitute any part of an offer or contract. Intending purchasers should not rely on them as statements of representation of fact, but must satisfy themselves by inspection or otherwise as to their accuracy. No person in this firm's employment has the authority to make or give any representation or warranty in respect of the property.